

## PRACTICAL 6

Apply the what – if Analysis for data visualization. Design and generate necessary reports based on the data warehouse data.

A book store and have 100 books in storage. You sell a certain % for the highest price of \$50 and a certain % for the lower price of \$20.

	A	B	C	D	E	F	G	H	I	J	K	L	M	N	O	P	Q
1																	
2																	
3																	
4			total books	% sold for highest price													
5			100	60													
6																	
7																	
8																	
9																	
10					no of books	unit profit											
11				highest	60	50											
12				lowest	40	20											
13				total price		3800											
14																	
15																	
16																	
17																	
18																	
19																	
20																	
21																	
22																	
23																	

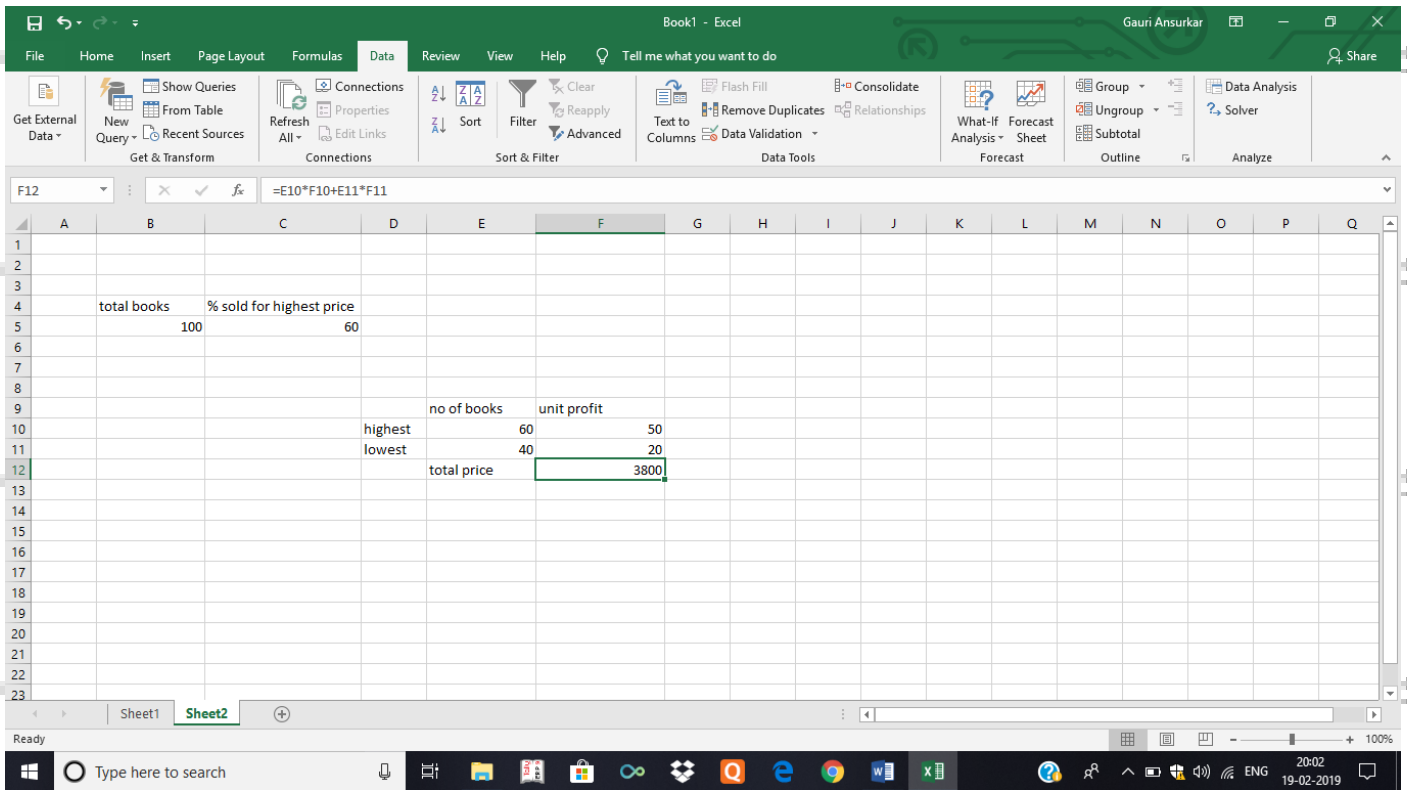
If you sell 60% for the highest price, cell D10 calculates a total profit of  $60 * 50 + 40 * 20 = 3800$ .

Create Different Scenarios But what if you sell 70% for the highest price? And what if you sell 80% for the highest price? Or 90%, or even 100%? Each different percentage is a different scenario. You can use the Scenario Manager to create these scenarios.

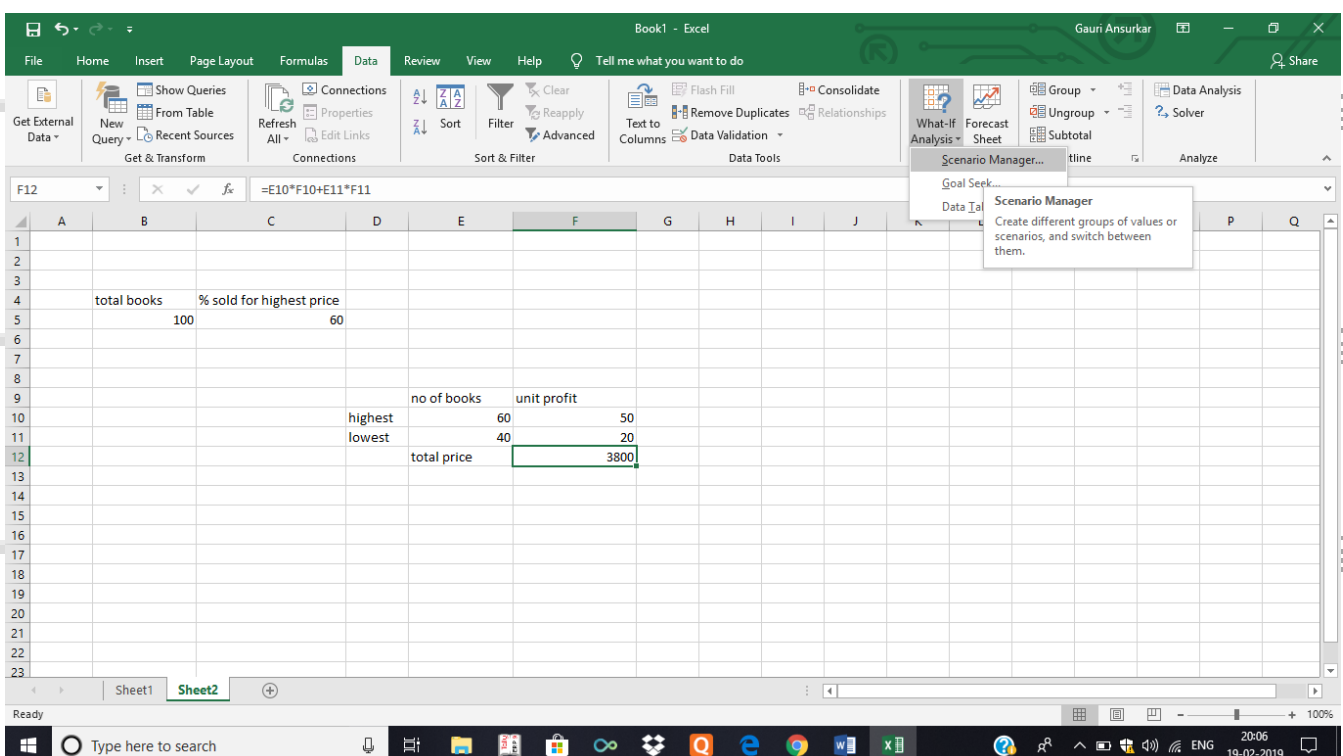
Note: To type different percentage into cell C4 to see the corresponding result of a scenario in cell D10 we use what if analysis.

What-if analysis enables you to easily compare the results of different scenarios.

## Step 1: In Excel, On the Data tab, in the Data tools group, click What-If Analysis

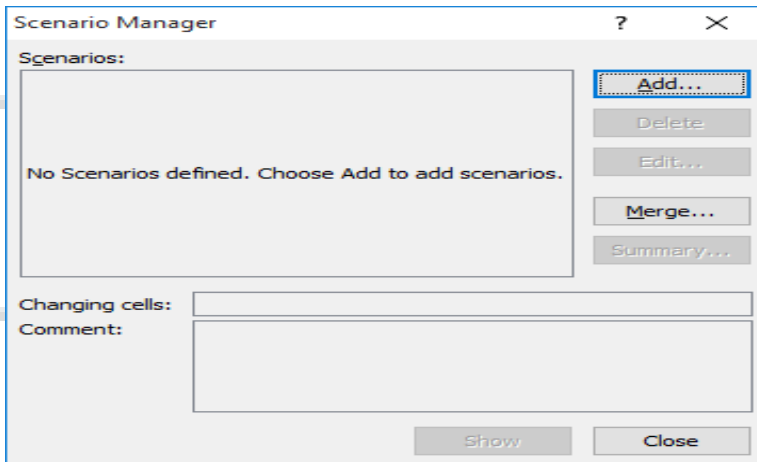


## Step 2: Click on What -if-Analysis and select scenario manager.



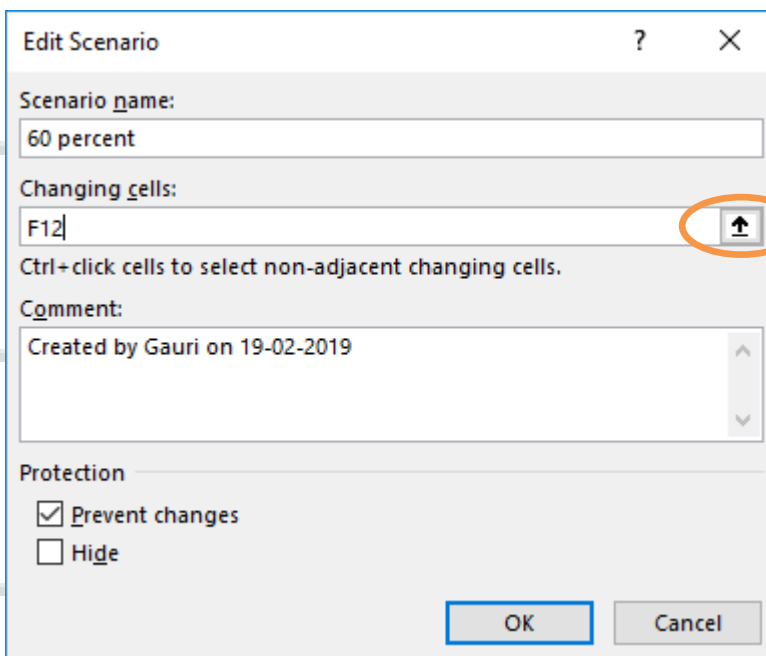
The Scenario Manager Dialog box appears.

**Step 3: Add a scenario by clicking on Add.**

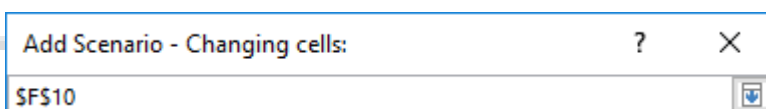


**Step 4: Type a name (60percent), select cell F10 (% sold for the highest price) for the Changing cells and click on OK.**

**Click on icon which is circled.**



**Select F10 cell.**



**Click back on the icon again and then click OK**

**Edit Scenario** ? X

Scenario name:  
60 percent

Changing cells:  
\$F\$10

Ctrl+click cells to select non-adjacent changing cells.

Comment:  
Created by Gauri on 19-02-2019

Protection

Prevent changes  
 Hide

OK Cancel

**Step 5: Enter the corresponding value 0.6 and click on OK again.**

**Scenario Values** ? X

Enter values for each of the changing cells.

1: \$F\$10 0.6

Add OK Cancel

**Scenario Manager** ? X

Scenarios:

60 percent

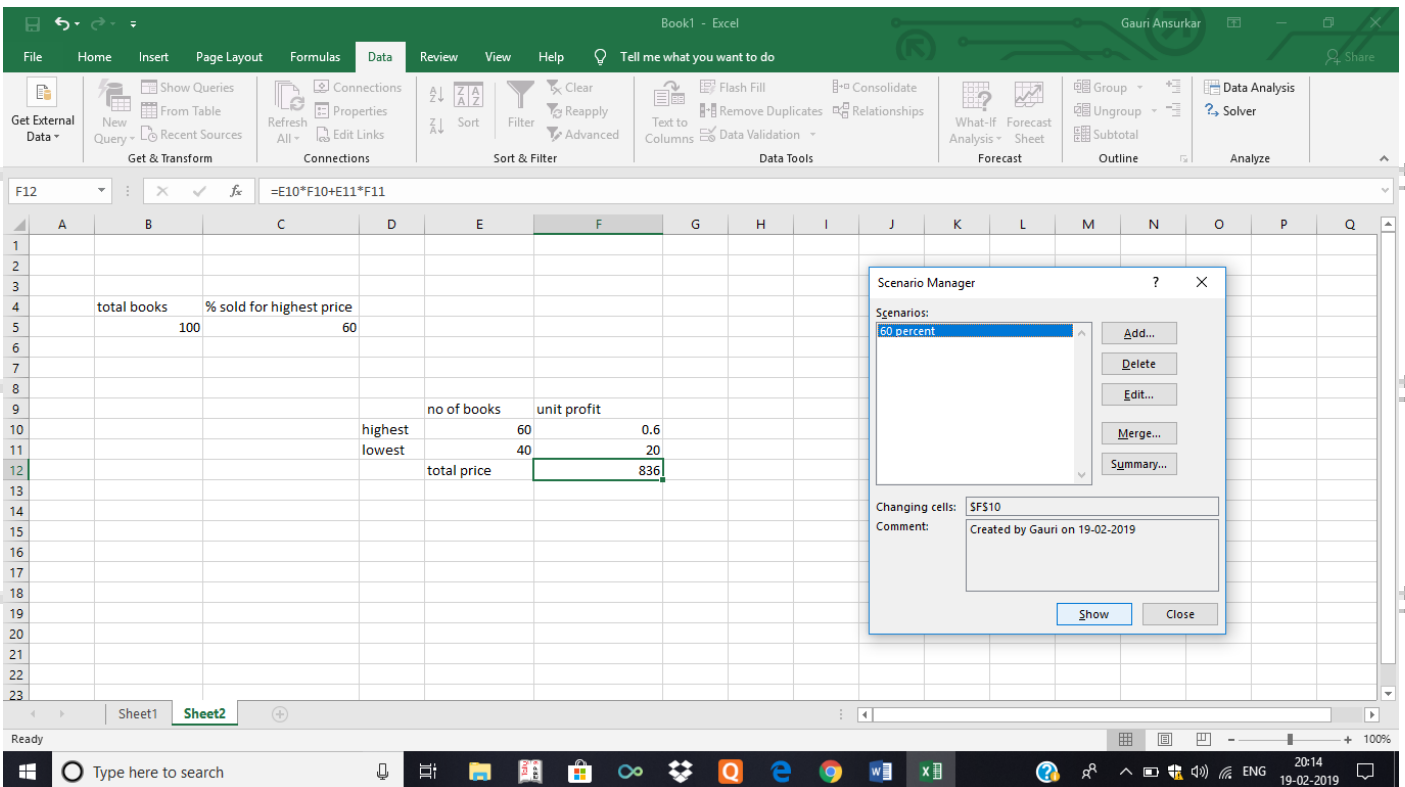
Add...  
Delete  
Edit...  
Merge...  
Summary...

Changing cells: \$F\$10

Comment: Created by Gauri on 19-02-2019

Show Close

**Step 6: To apply scenarios click on Show**



**Step 7: Next, add 4 other scenarios (70%, 80%, 90% and 100%)**

**Finally, your Scenario Manager should be consistent with the picture below:**

