

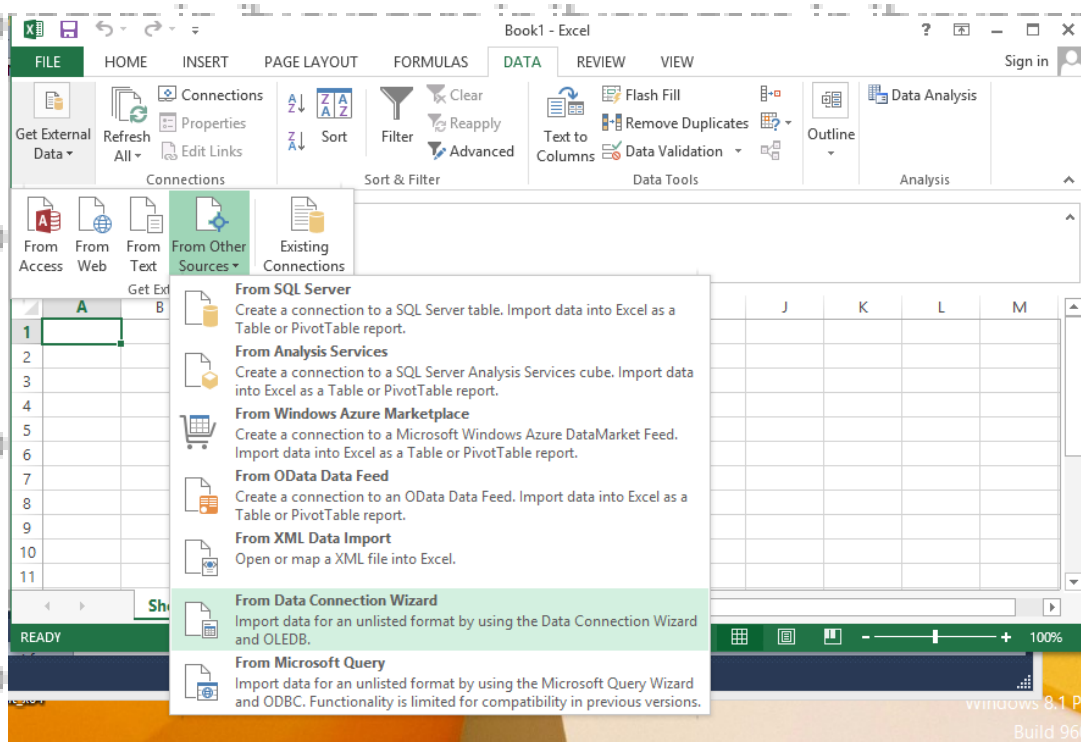
PRACTICAL 5 a

Import the datawarehouse data in Microsoft Excel and create the Pivot table and Pivot Chart

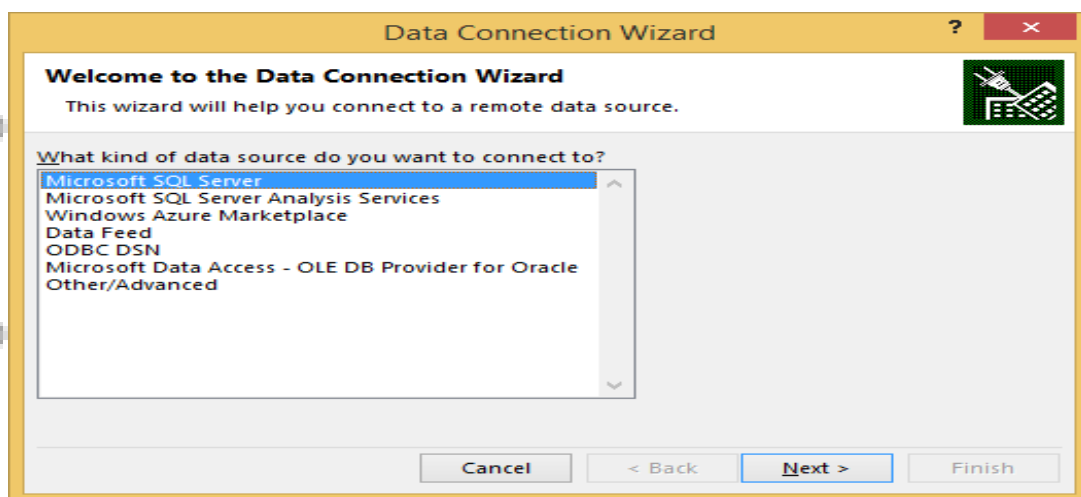
(Ms Office Professional is used to make sure Power View is enabled for visualization.)

Step 1: Open Excel 2013 (Professional)

Go to Data tab → Get External Data → From Other Sources → From Data Connection Wizard



Step 2: In Data Connection Wizard → Select Microsoft SQL Server → Click on Next

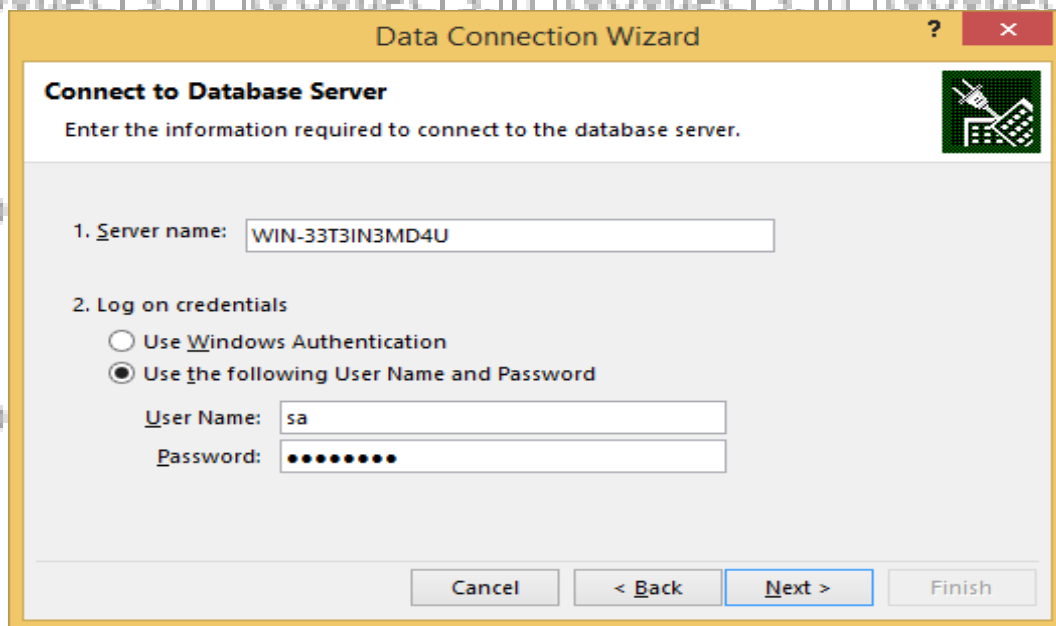


Step 3: In connect to Database Server provide Server name(Microsoft SQL Server Name)

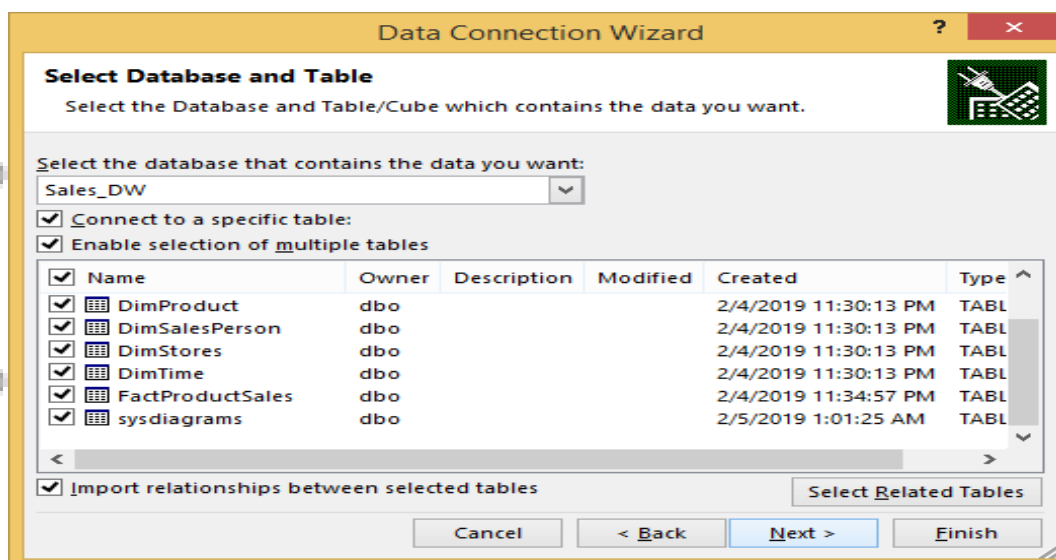
Provide password for sa account as given during installation of SQL Server 2012 full version)

Password: admin123

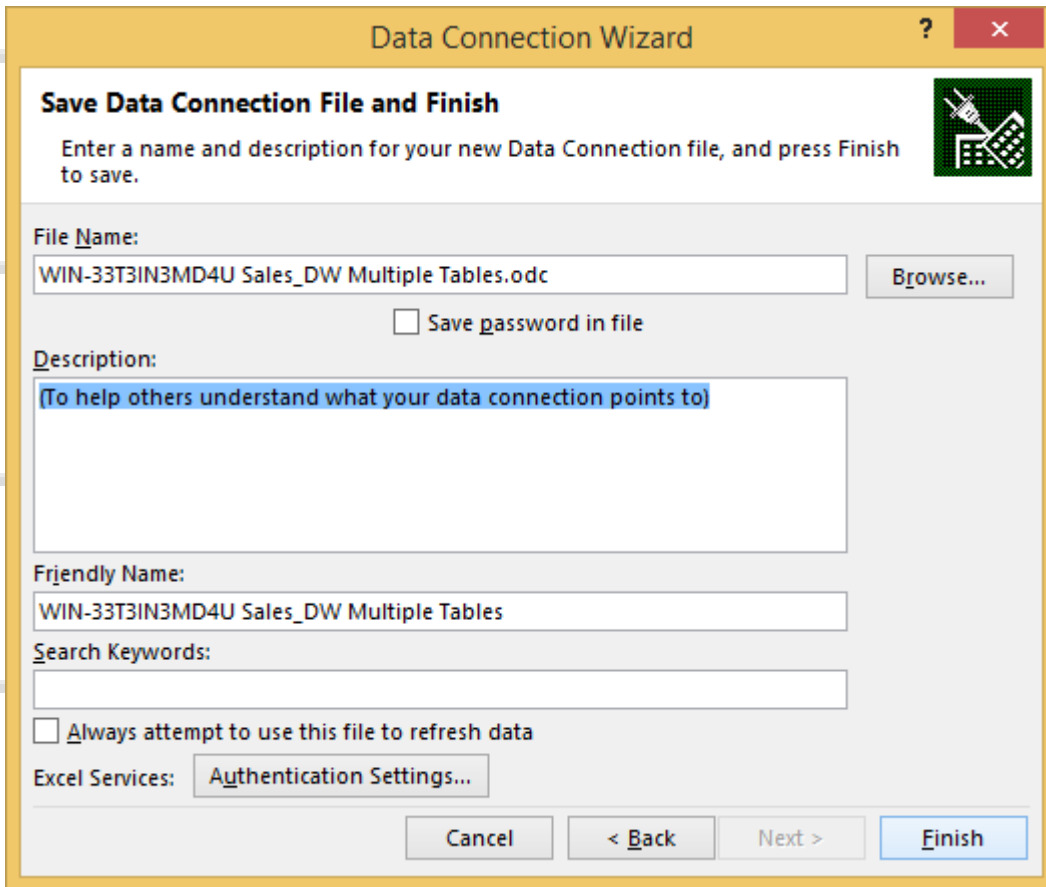
Click on Next



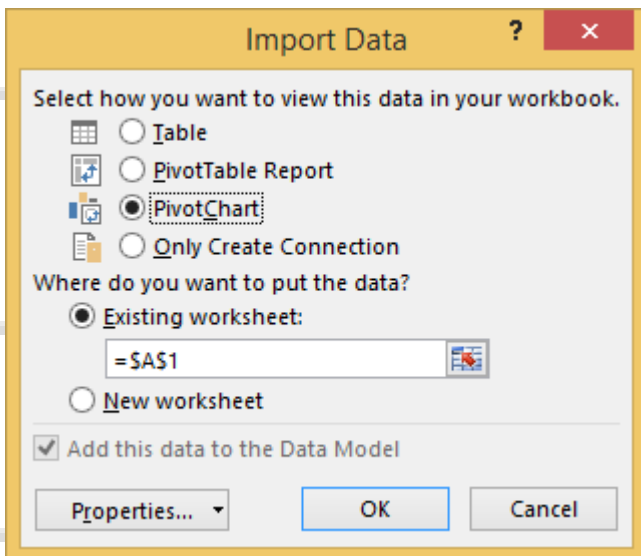
Step 4: In Select Database and Table → Select Sales_DW (already created in SQL) → check all dimensions and import relationships between selected tables



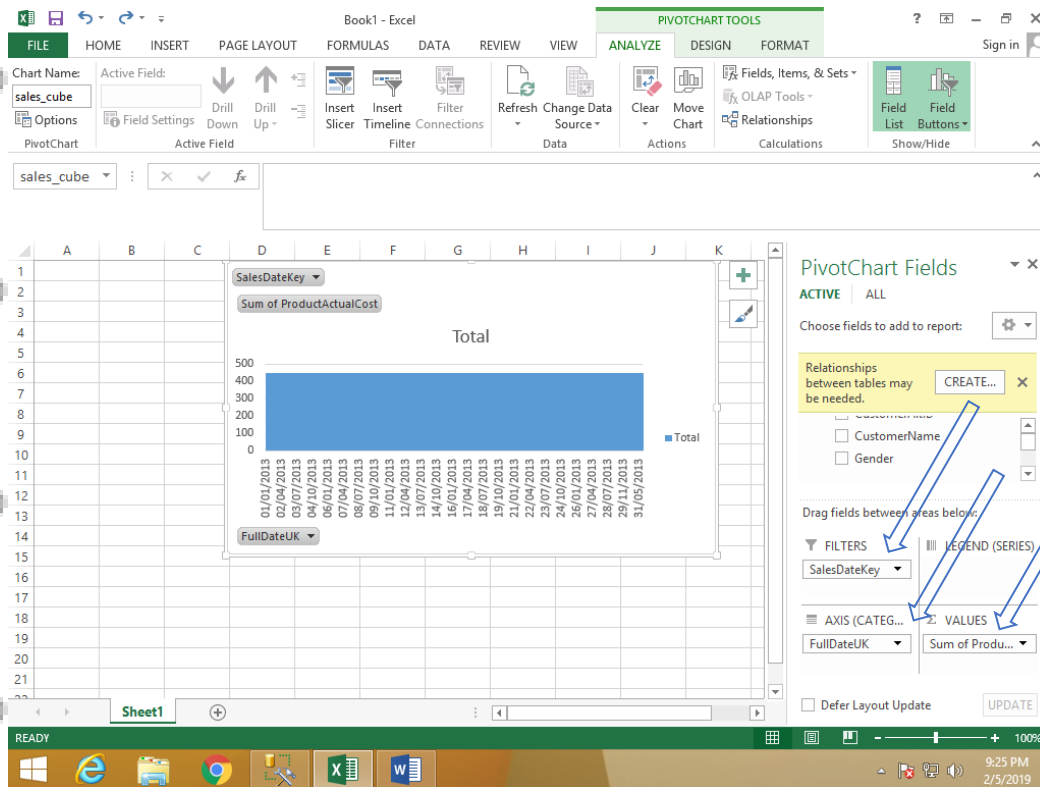
Step 5: In save data connection files browse path and click on Finish



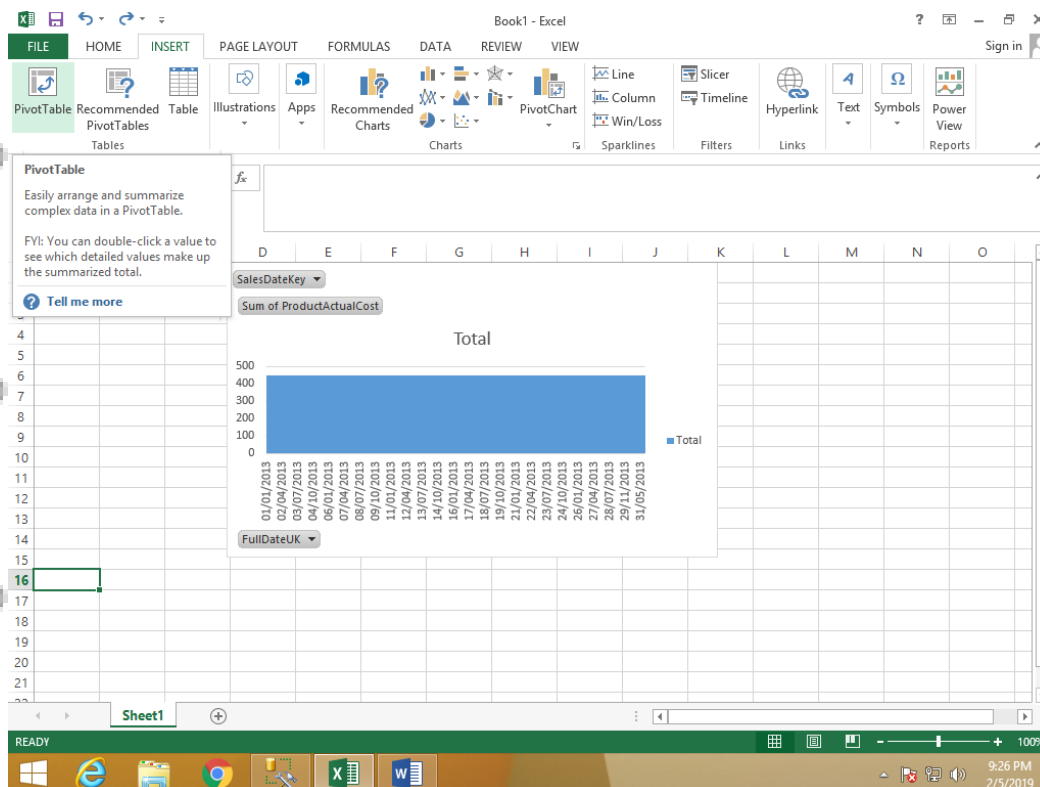
Step 6: In import data select Pivot Chart and click on OK



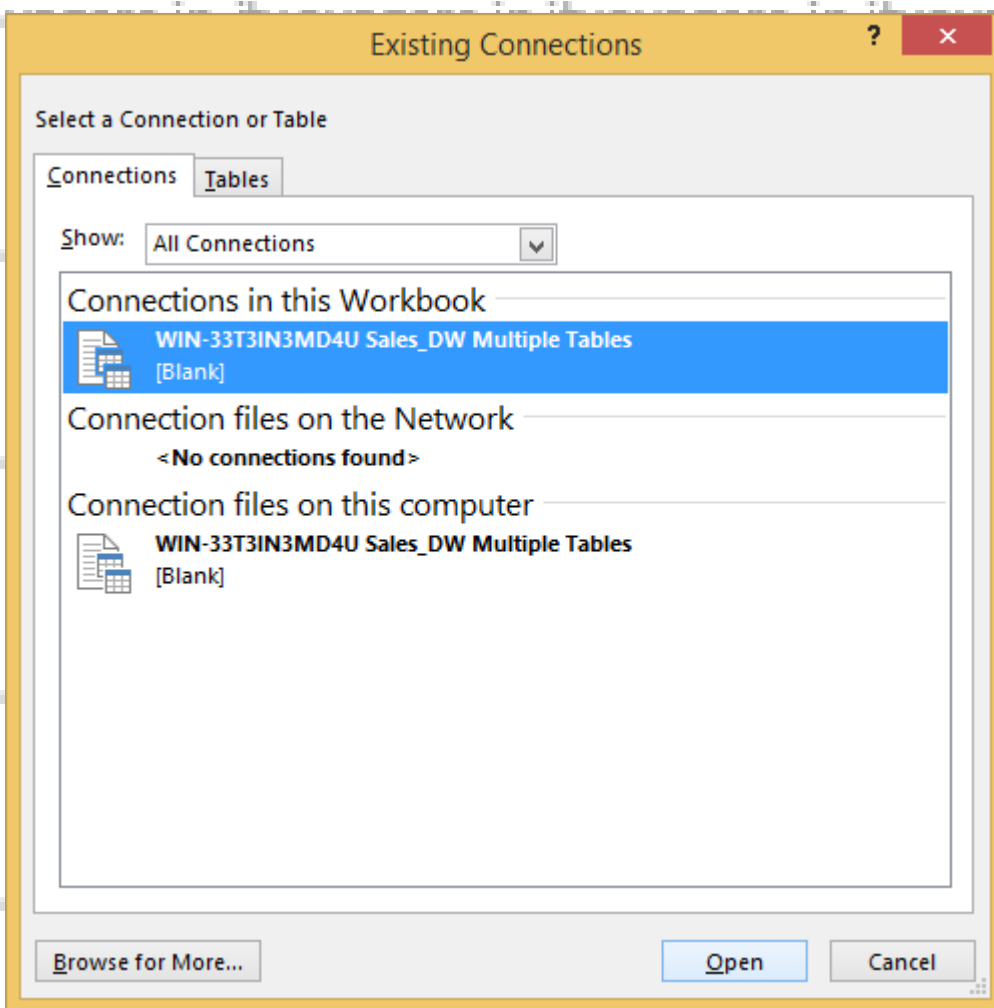
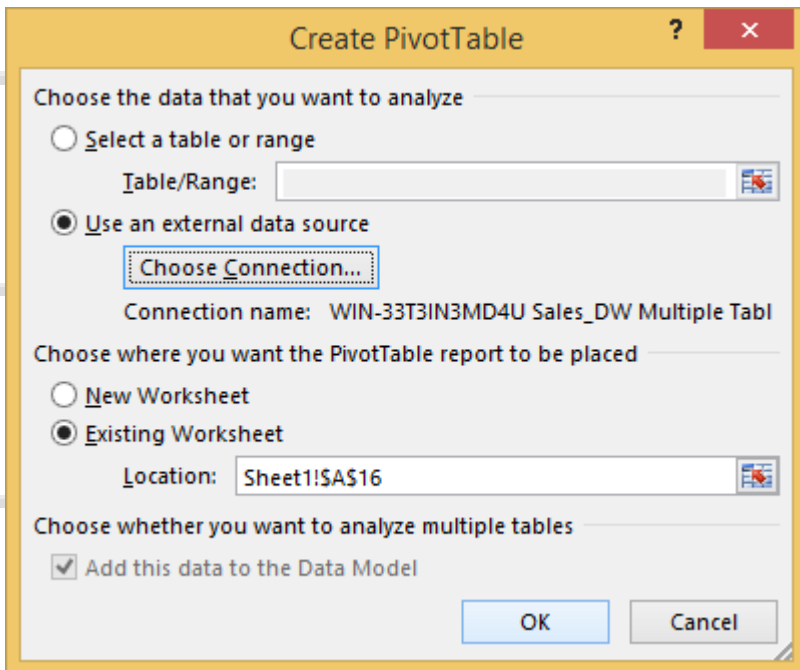
Step 7: In fields put SalesDateKey in filters, FullDateUK in axis and Sum of ProductActualCost in values



Step 8: In Insert Tab → go to Pivot Table



Step 9: Click on Choose Connection to select existing connection with Sales_DW and click on open



Pivot table and Pivot chart is created

The screenshot displays the Microsoft Excel interface with the PivotTable Tools ribbon active. The PivotTable is located in the range A16:H27. The PivotChart is located in the range D7:H15. The PivotTable Fields task pane is open on the right side of the screen.

Row Labels	Sum of SalesPersonID	Sum of ProductKey
Bill Gates	78	55
M	78	55
Emma Wattson	78	55
F	78	55
Henry Ford	78	55
M	78	55
Muskan Shaikh	78	55
F	78	55
Richard Thruvin	78	55
M	78	55
Grand Total	78	55

The PivotChart shows a bar for 'M' with a value of 78. The PivotTable Fields task pane shows the following settings:

- Relationships between tables may be needed. CREATE...
- ProductKey (checked)
- ProductAltKey (unchecked)
- ProductName (unchecked)
- Filters: CustomerName (M), Gender (M)
- Columns: Values (Sum of SalesPersonID)
- Rows: Values (Sum of ProductKey)