

PRACTICAL 4 b

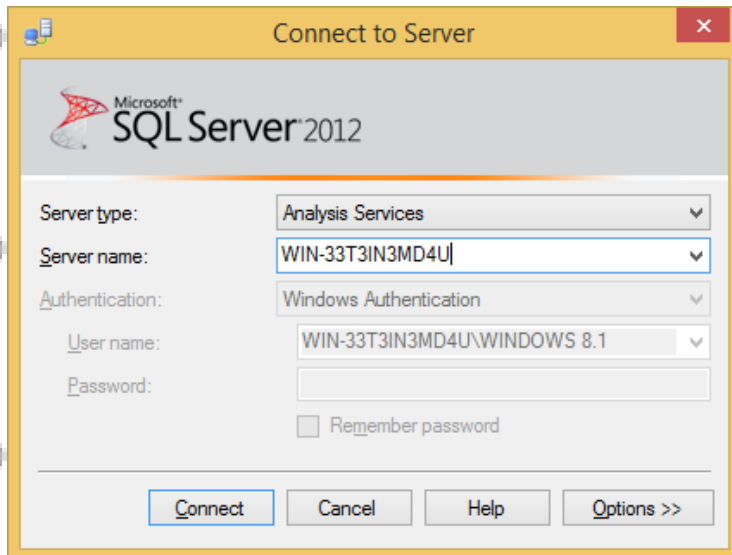
Execute the MDX queries to extract the data from the datawarehouse.

Step 1: Open SQL Server Management Studio and connect to Analysis Services.

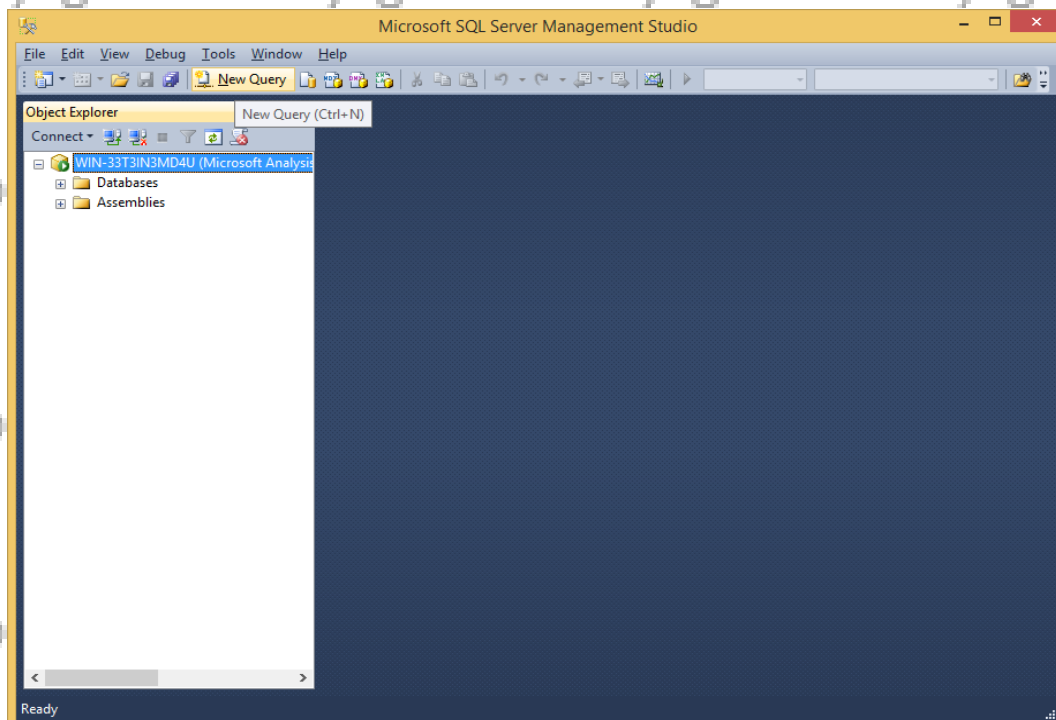
Server type: Analysis Services

Server Name: (according to base machine)

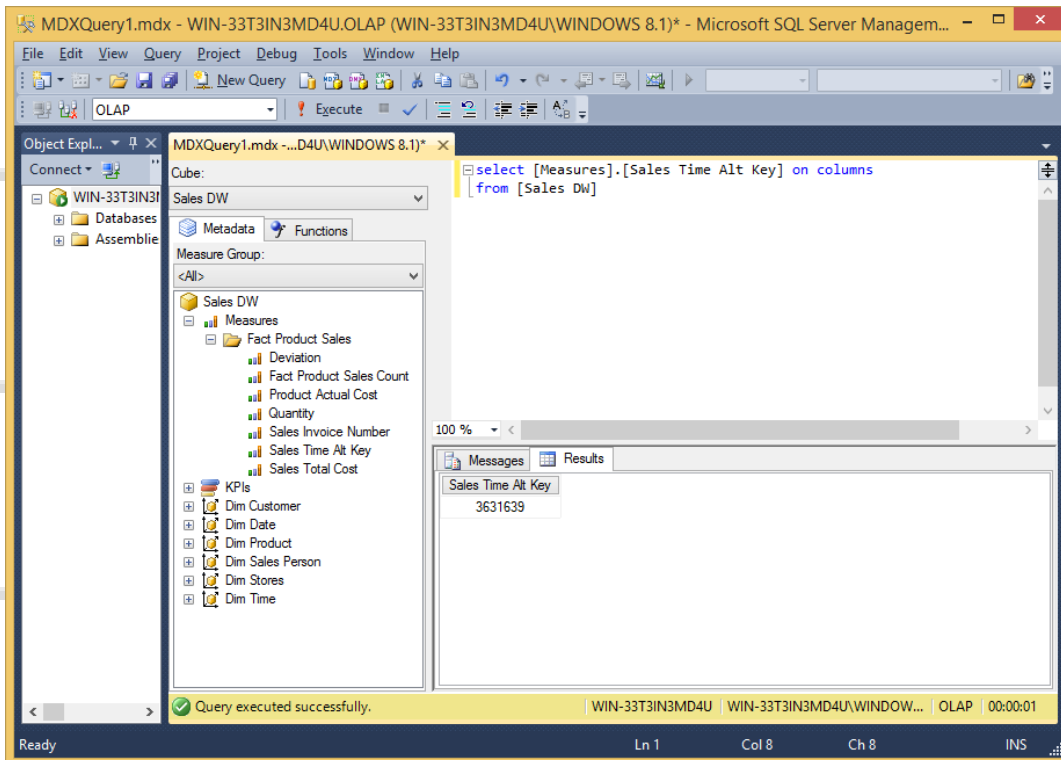
Click on connect



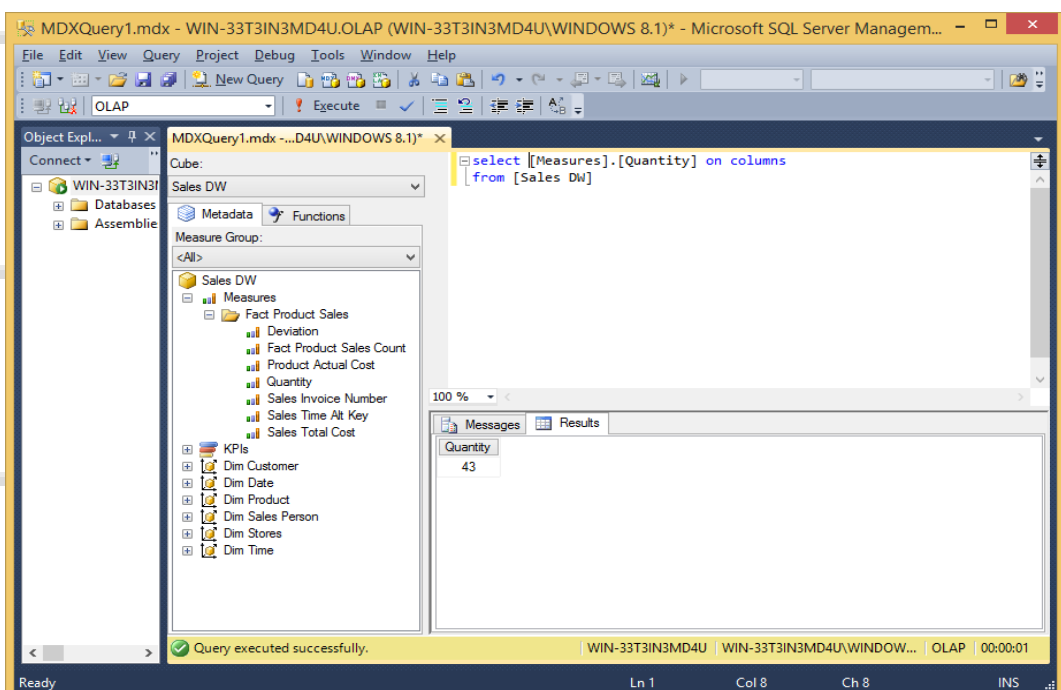
Step 2: Click on New Query & type following query based on Sales_DW



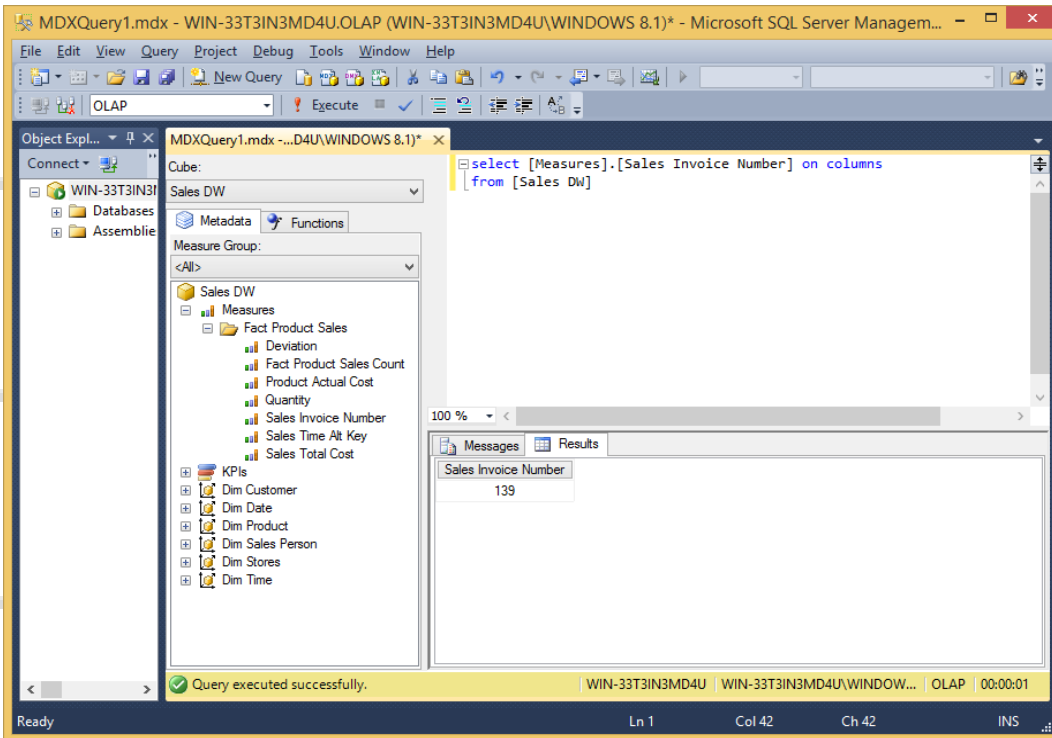
select [Measures].[Sales Time Alt Key] on columns
from [Sales DW]
Click on execute



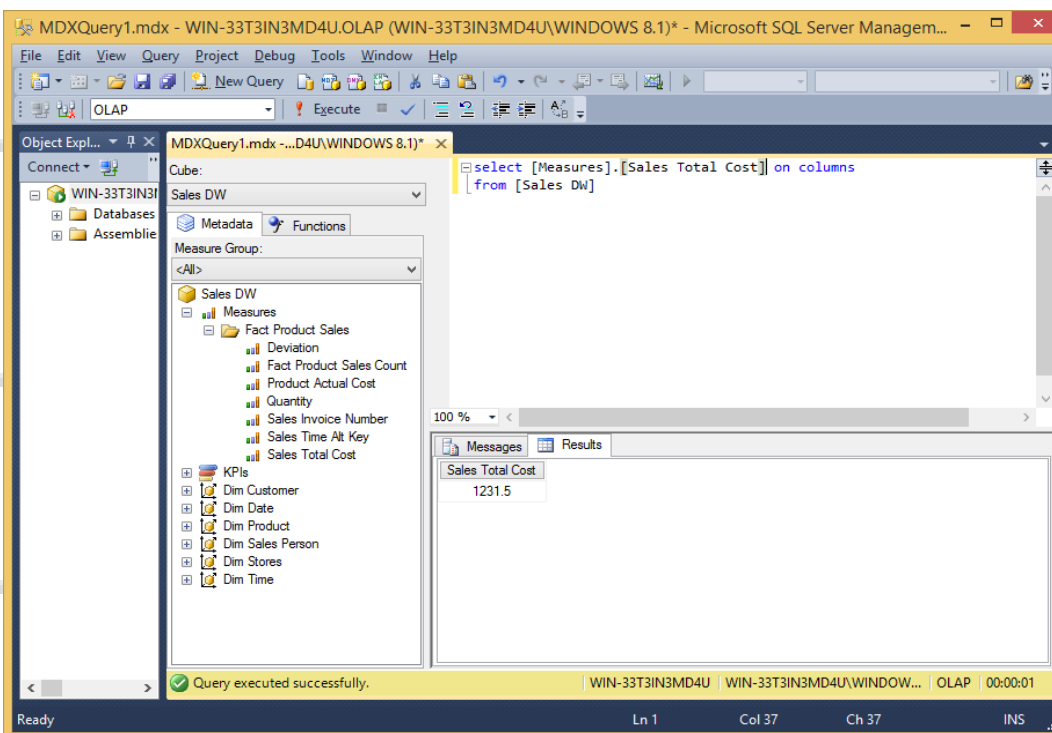
select [Measures].[Quantity] on columns
from [Sales DW]



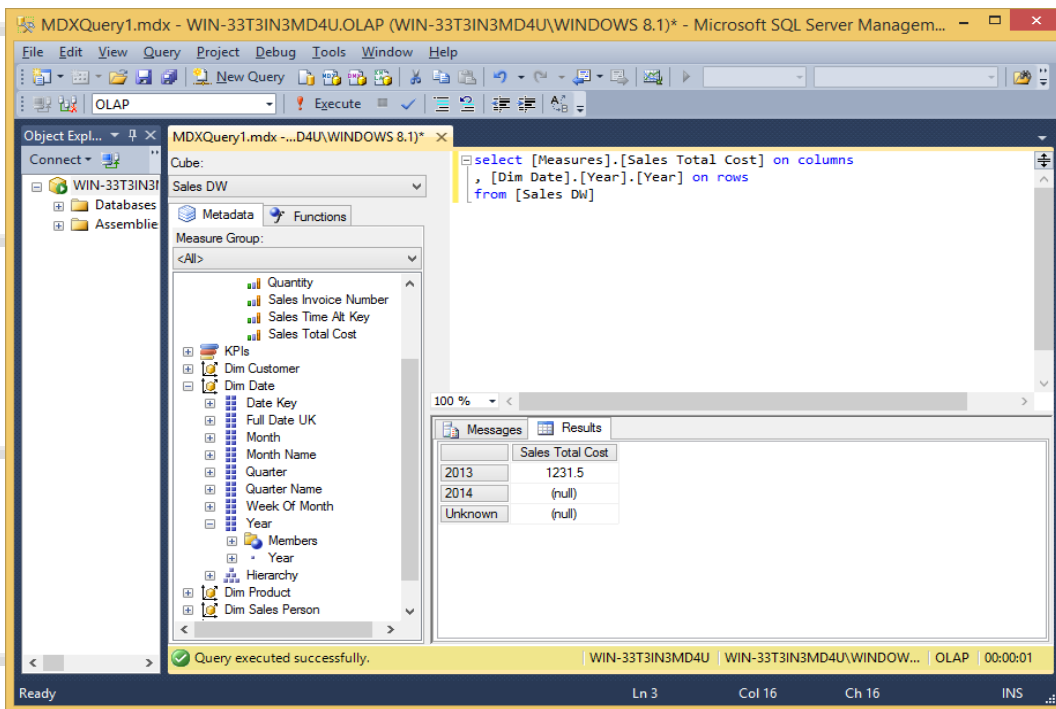
**select [Measures].[Sales Invoice Number] on columns
from [Sales DW]**



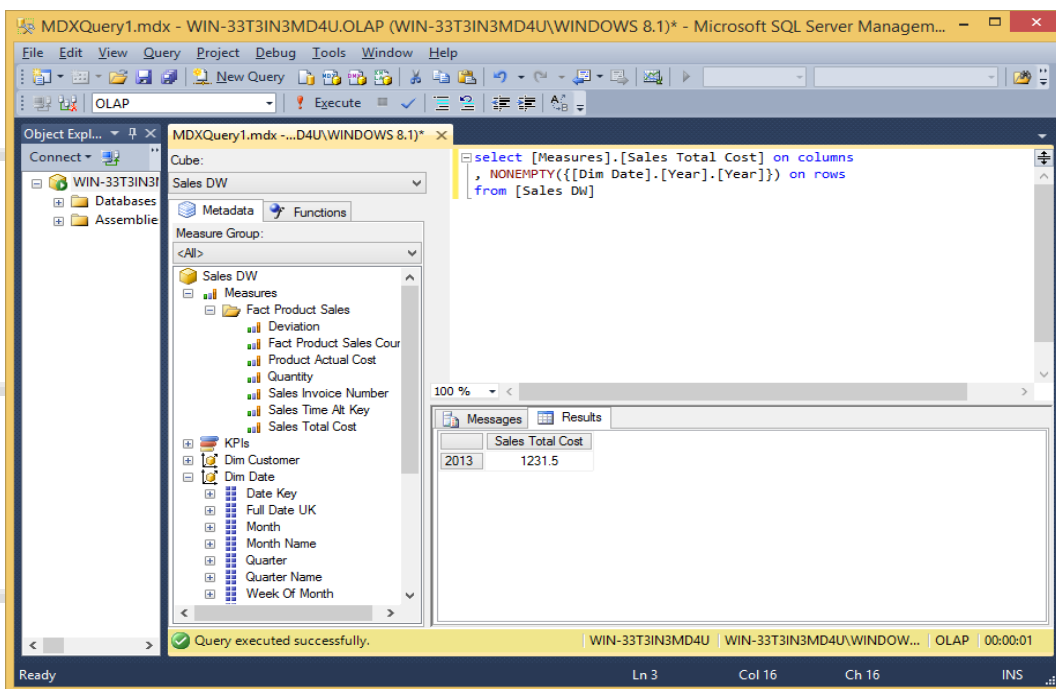
**select [Measures].[Sales Total Cost] on columns
from [Sales DW]**



select [Measures].[Sales Total Cost] **on columns**
, [Dim Date].[Year].[Year] **on rows**
from [Sales DW]



select [Measures].[Sales Total Cost] **on columns**
, **NONEMPTY**({[Dim Date].[Year].[Year]}) **on rows**
from [Sales DW]



select [Measures].[Sales Total Cost] on columns
from [Sales DW]
Where [Dim Date].[Year].[Year].&[2013]

